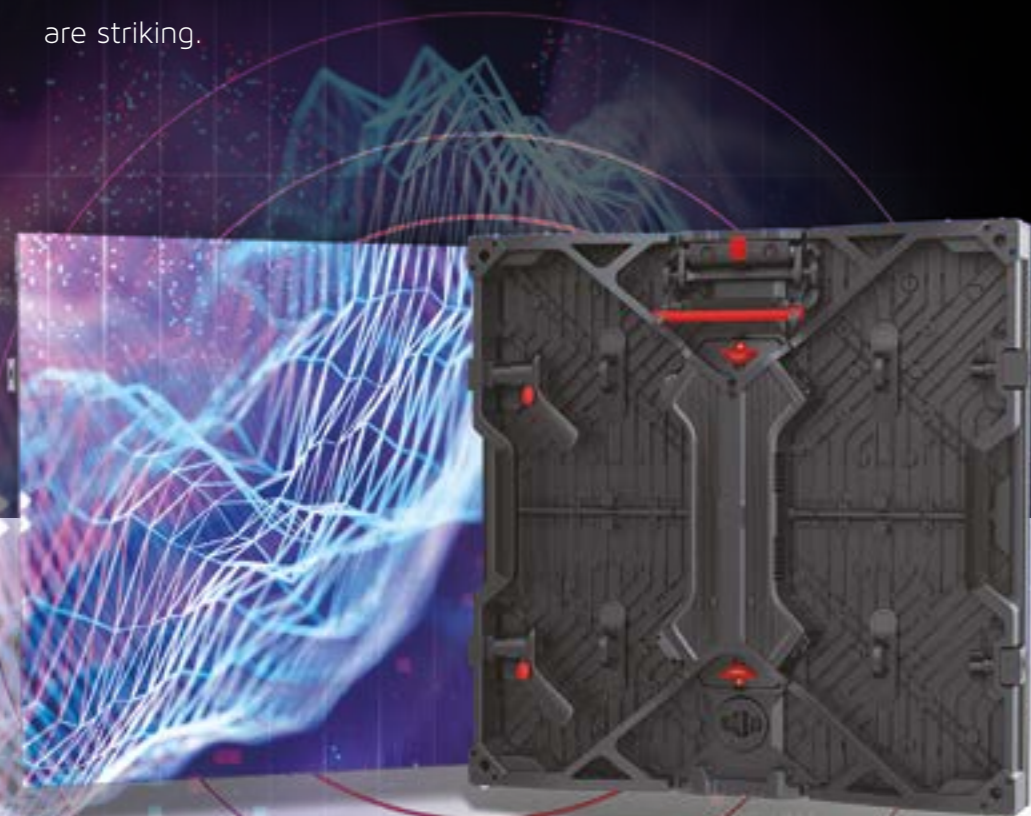


Simply Stunning

Only the best is good enough. Surpassing existing technology, ROE Visual has developed the 4in1 mini LED in a 2.3 and 1.5 pixel pitch, exclusively available for Ruby. Stronger, less reflection and more contrast due to an optimized black body, the resulting colors are striking.



Advanced LED technology for an incredible viewing experience

How to comprise the latest technology into an advanced LED panel and translate that to an outstanding viewing experience? ROE Visual has done just that. The Ruby LED panels are a new generation of LED panels equipped with features that are beneficial from build to performance.

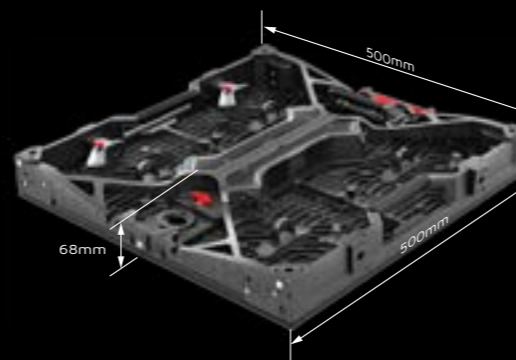
Specifications

Module	Ruby 1.5	Ruby 1.5F	Ruby 2.3
Pixel Pitch	1.56mm	1.56mm	2.31mm
Max Brightness Calibrated	800nits	1,000nit	1,500nits
Panel Dimension	500 x 500 x 73mm 19.7" x 19.7" x 2.87"	500 x 500 x 71mm 19.7" x 19.7" x 2.8"	500 x 500 x 68mm 19.7" x 19.7" x 2.68"
Panel Resolution (H x V)	320 x 320	320 x 320	216 x 216
Weight Per Panel	8.16kg; 17.99lbs	8.46kg; 18.65lbs	8.16kg; 17.99lbs
Power Consumption Max/Average	204W / 102W	243W / 121W	180W / 90W
BTU Max/Average	696 / 320	829 / 381	614 / 282
Transparency	Solid	Solid	Solid
Serviceability	Front / Rear	Front / Rear	Front / Rear
Curving (Concave & Convex)*3	Concave 5°-Convex 3°	Concave 5°-Convex 3°	Concave 5°-Convex 5°
Max. Hanging (panels)*1	20	20	20
Max. Stacking (panels)*2	10	10	12
LED Configuration	4 in 1 common cathode	1010 flip chip	4 in 1 common cathode
Viewing Angle Vertical	140°	140°	140°
Viewing Angle Horizontal	140°	140°	140°
Multiplexing	16	10	12
Refresh Rate	3840Hz	7680Hz	3840Hz
Gray Scale	14bit	16bit	14bit
Frame Material	Magnesium Alloy	Magnesium Alloy	Magnesium Alloy
Operational Temp / Humidity	-20°~ 45°C, 10-90% RH -4°~ 113°F, 10-90% RH	-20°~ 45°C, 10-90% RH -4°~ 113°F, 10-90% RH	-20°~ 45°C, 10-90% RH -4°~ 113°F, 10-90% RH
Storage Temp / Humidity	-40°~ 60°C, 10-90% RH -40°~ 140°F, 10-90% RH	-40°~ 60°C, 10-90% RH -40°~ 140°F, 10-90% RH	-40°~ 60°C, 10-90% RH -40°~ 140°F, 10-90% RH
IP Rating	Indoor	Indoor	Indoor
Certifications	CE, ETL, FCC, RoHS	CE, ETL, FCC, RoHS	CE, ETL, FCC, RoHS
3D Ready	Yes	Yes	Yes

*Notes: The Specifications are for reference, actual values may vary.

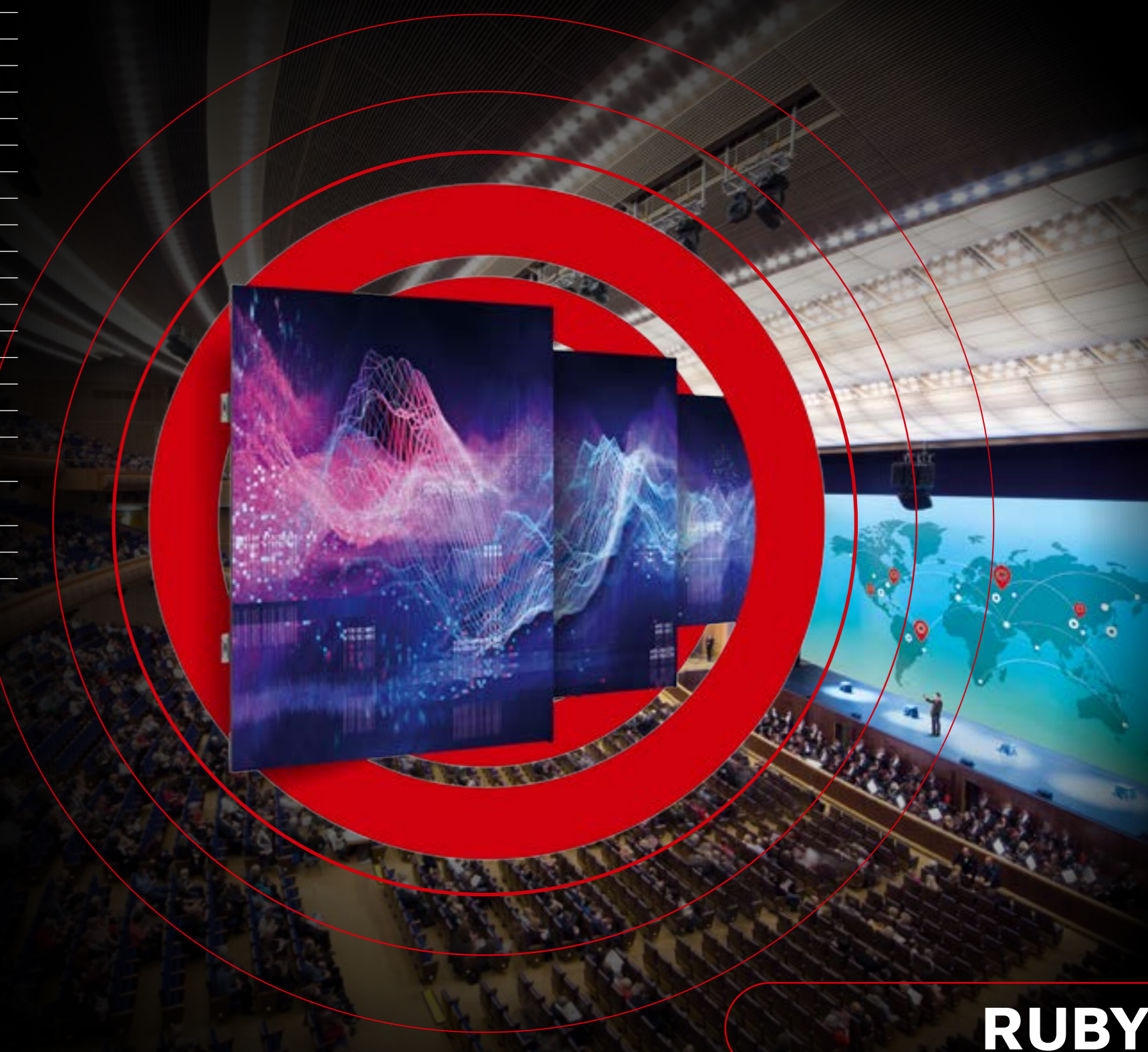
1. The max. hanging amount is only valid when the ROE Visual hanging bar and complementary accessories are used and in an indoor situation. No climbing is allowed.
2. The max. stacking amount is only valid when the ROE Visual stacking system and complementary accessories are used, sufficient ballast is applied and in an indoor situation. No climbing is allowed.
3. Convex curving ability only applies to custom tiles.

Dimensions



www.roevisual.com

ROE Visual Co., Ltd. | ROE Visual US, Inc. | ROE Visual Europe BV
roe@roevisual.com | roe@roevisual.com | roe@roevisual.com



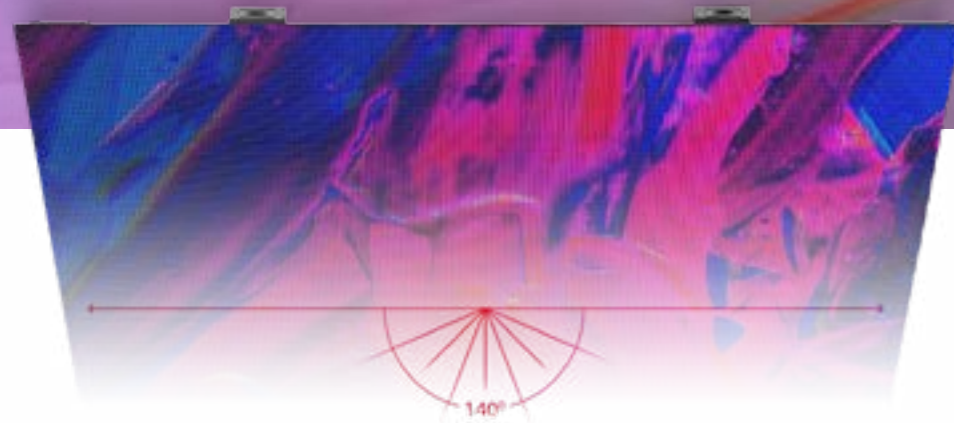
RUBY

Get ready for the next generation

INDOOR LED PANELS



Your story, visualised better than ever before

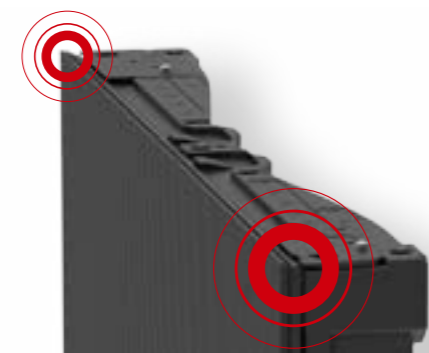


Cutting-Edge common cathode technology

With its high-brightness LED performance, the Ruby panels give an excellent visual performance for both direct viewing and on-camera visuals. Using the common cathode technology, power consumption is reduced by 20-25%, resulting in optimum heat-dissipation. Due to this technology more brightness and less color differences in the LEDs makes the visual performance stable and brilliant.

Automatic Edge Protection

The Ruby LED panels incorporate automatic edge-protection on each panel corner, thereby reducing pixel damage drastically. The magnet-assisted assembly and vertically operated side locks with Z-axis correction make assembly quick, accurate and easy.



Easy Maintenance

With both front and rear module service, the Ruby panels are easy to maintain. The integrated PSU and Hub unit make repair and replacement of spare parts easy and cost-effective.

The new standard for stunning visuals

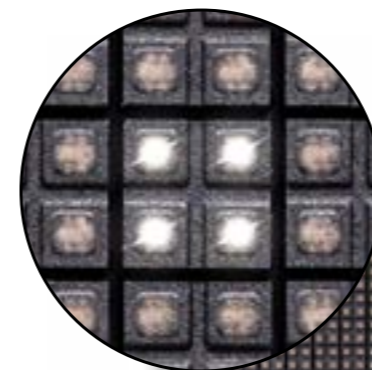
A multitude of shades of black coming alive

With its improved grayscale Ruby offers precision imagery, showing black in endless scales and fluent gradients.



Details that matter. Individual LED Lens

Each 4in1 LED supports 4 individual lenses instead of on large one. This results in a remarkable LED performance, due to reduced glare and leads to a perfect on-camera performance of the LED screens. The enhanced black body between the individual LEDs creates more contrast and guarantees optimum brightness.



Modular design PSU and HUB combined in one unit

High-brightness, 1500 nits

HDR supported LED technology

HDR

Common cathode technology for energy saving

Front and rear module service

Unique strong 4in1 LEDs

Automatic edge-protection



HDR. True Colors

Sporting advanced driver ICs and LEDs with large color space, Ruby is fully HDR adaptive. Adding excellent color depth and great grayscale to your visuals.

